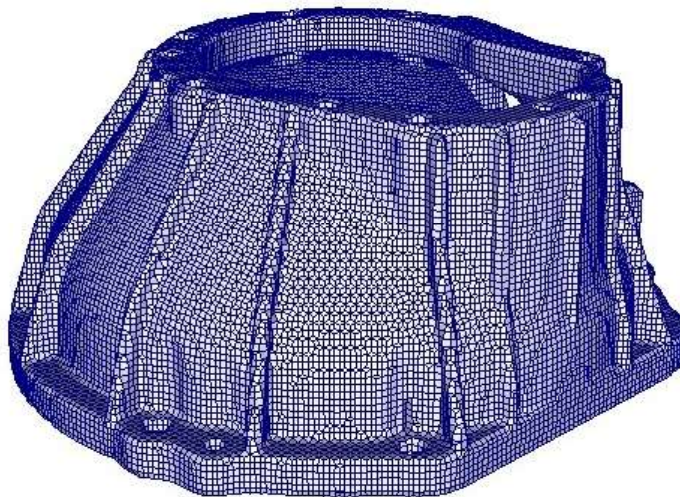


Simulation results "Demo_flywheelhousing"

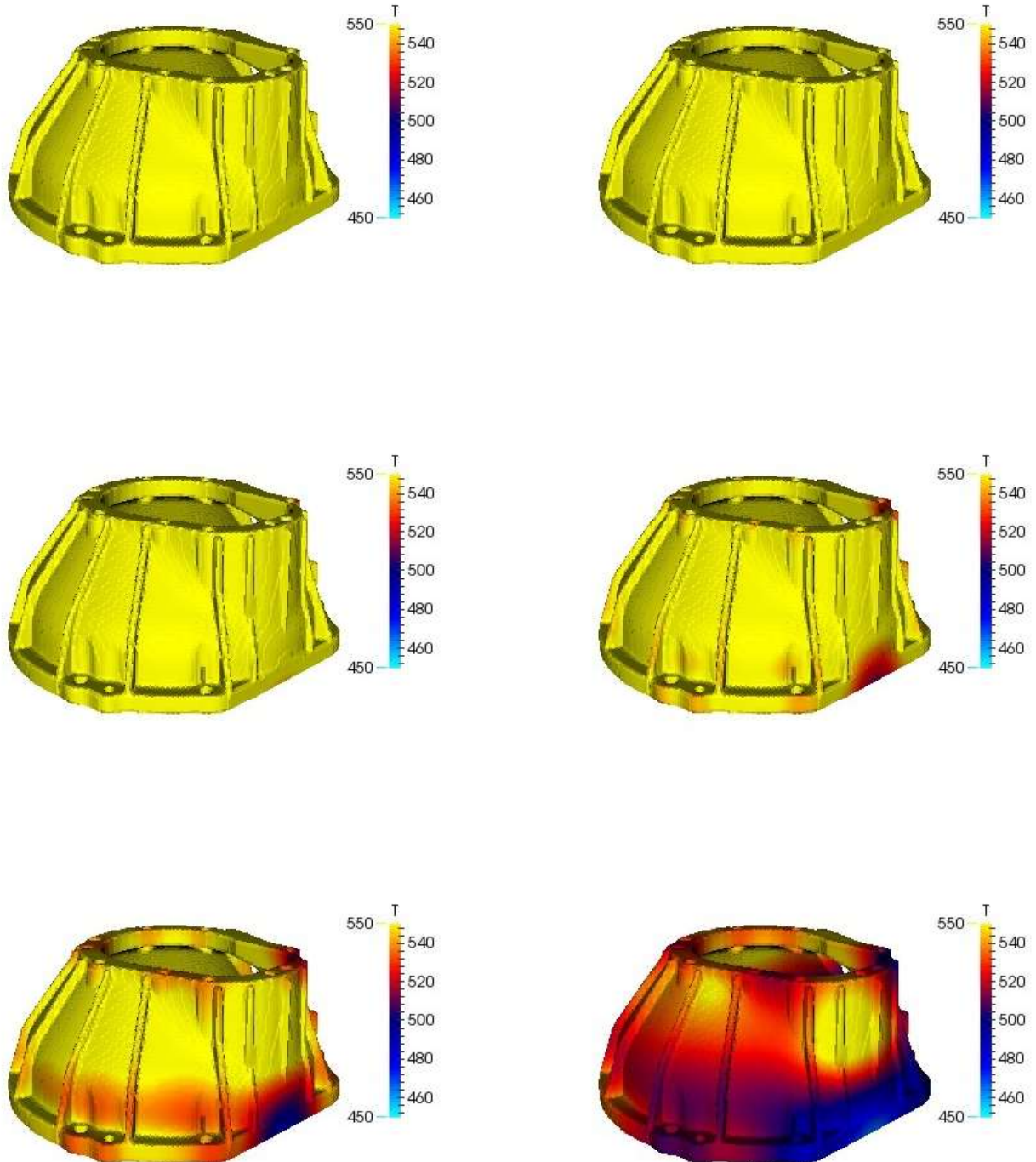
Cast alloy: Aluminium
Mould material: chemical_sand
Chvorinov constant: 1.13 s/mm²
Initial temperature: 620 °C
Solidification temperature: 557 °C
Solidification time: 12.5 s
Casting modulus: 0.33 cm
Shrinkage percentage: 7.0 %
Casting volume: 0.10 liter
Number of cells: 195270
Calculation date: wo nov 25 16:26:16 CET 2020
Calculation time: 24 m 58 s
Riser predictor: 40 (1x) ; 31 (2x); 27 (3x)

Casting



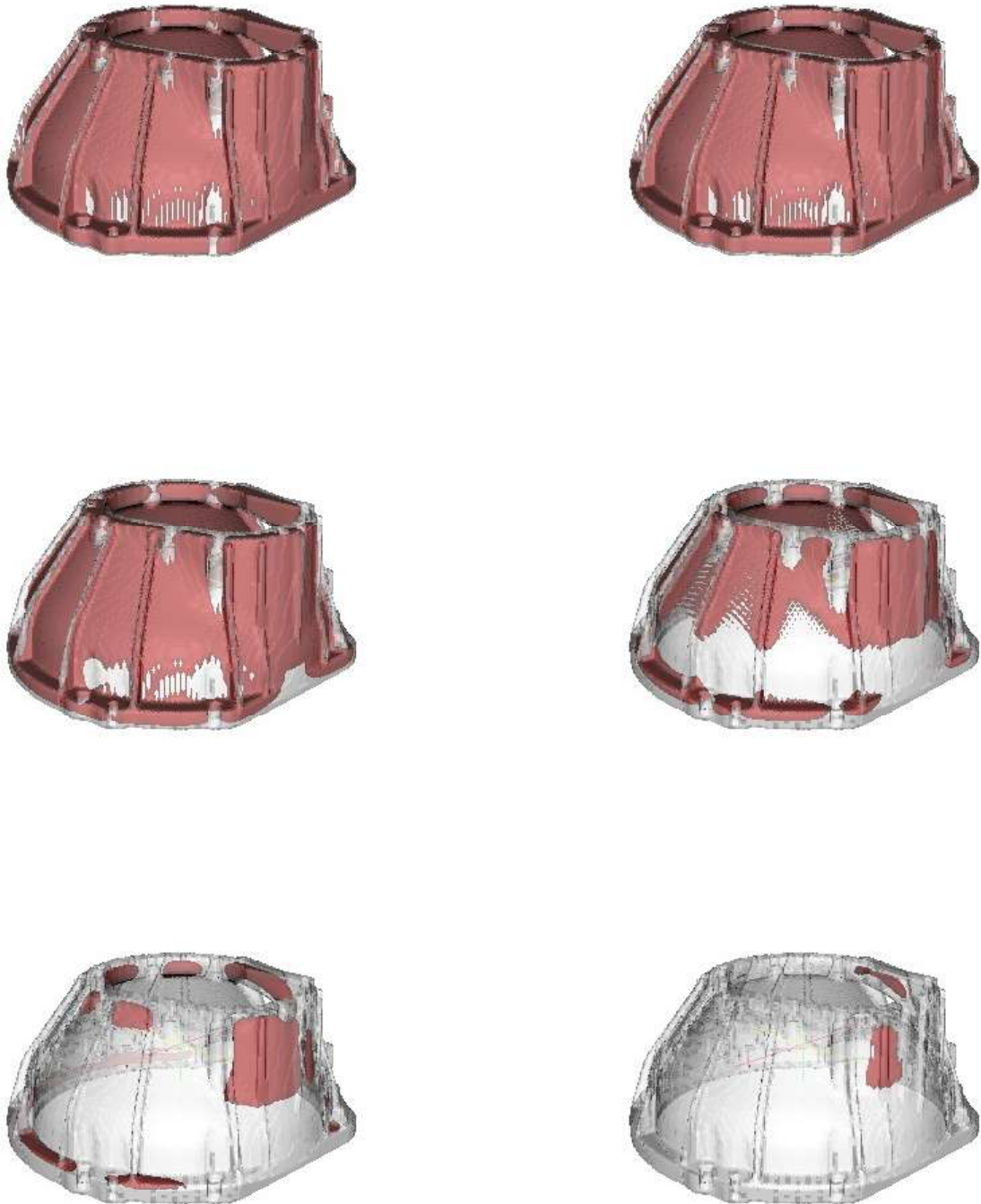
Mesh

Temperatures



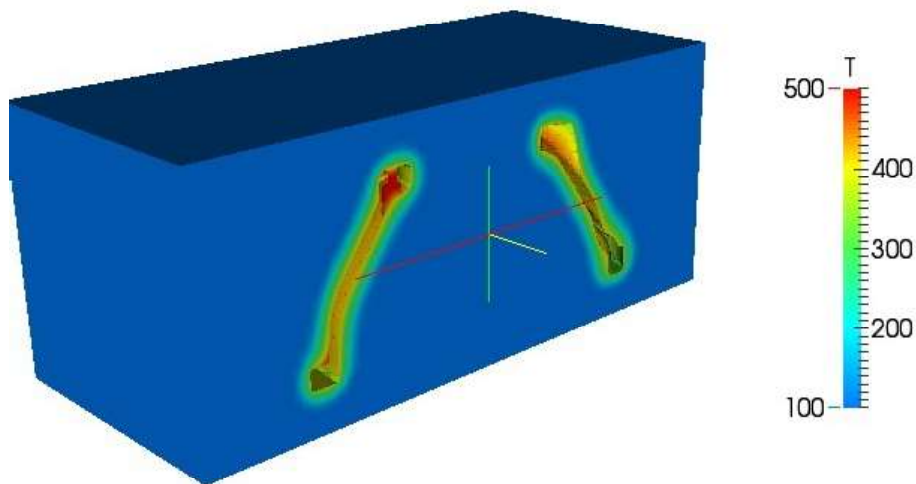
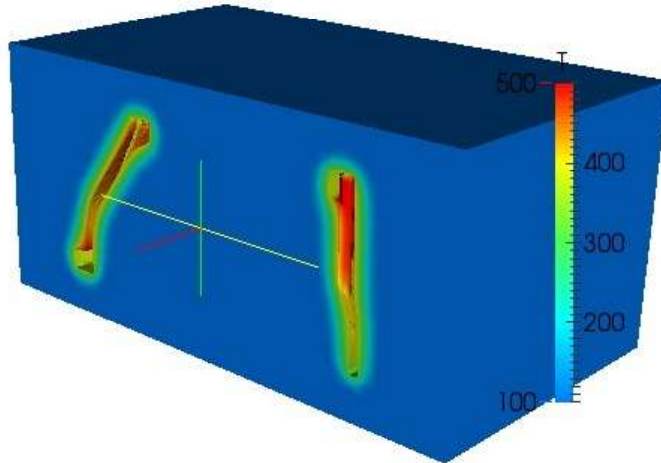
Temperatures at 10%, 25%, 50%, 75%, 90% and 100% of the solid fraction.

Liquid zones



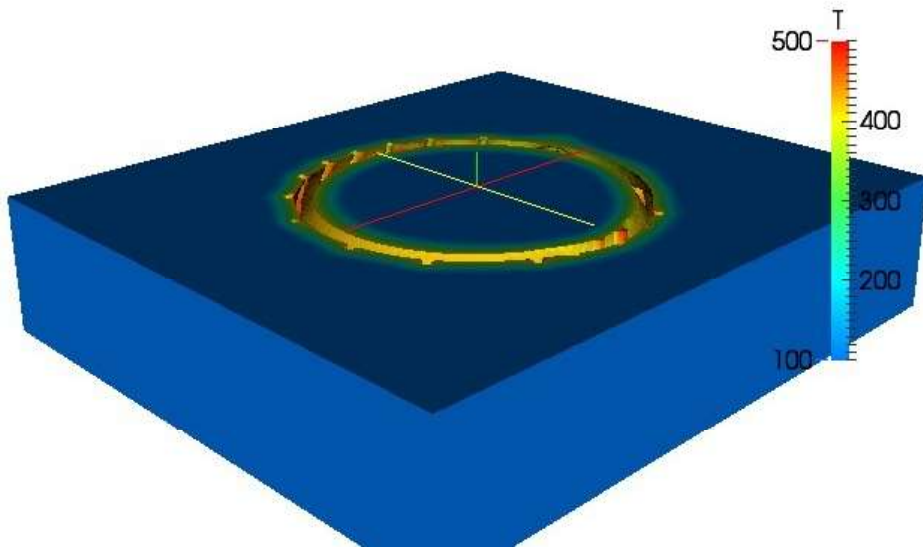
Liquid zones at 10%, 25%, 50%, 75%, 90% and 100% of the solid fraction.

Mould temperatures



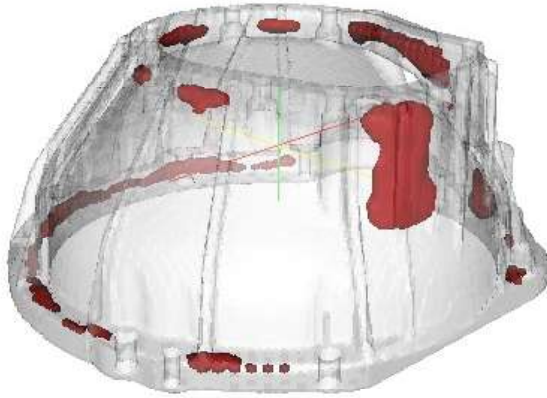
Hotspots in the mould.

Mould temperatures



Hotpots in the mould.

Shrinkage



Shrinkage from two angles.

